

# Welcome to the Fairfield Family!



**P1 Orientation (2025 Intake)  
8 November 2024 Friday**

# Programme for Parents

Time	Programme
2.30pm	Start of Orientation Programme <ul style="list-style-type: none"> <li>• Vice-Principal's Sharing</li> <li>• Sharing by Year Head &amp; Assistant Year Head / Lower Primary</li> </ul>
3.15pm	Classroom Session with Form Teachers
After Classroom Session	Meeting with Special Educational Needs (SEN) Team <ul style="list-style-type: none"> <li>• For parents with queries on SEN support for your child</li> </ul>
4.00pm	End of Orientation Programme

# Meet Our School Leaders

*(from left to right)*

**Mrs Yap Tsui Lan (Vice-Principal)**

**Mrs Soh Mei Foong (Principal)**

**Mr Ho Kok Soon (Vice-Principal)**





# Meet Our School Management Team

# Meet Our Allied Educators

**Dr Audrey Ang**  
(School Counsellor)

**Mdm Hariyani**  
(SEN Officer)

**Ms Tan Yen Yen**  
(SEN Officer)

**Ms Leona Lam**  
(Senior SEN Officer)

**Mr Choy Wei Thai**  
(SEN Officer)



# Our School Milestones

1888	Miss Sophia Blackmore founded <b>Telok Ayer Girls' School</b>
1912	Miss Mary Olsen started <b>Fairfield Girls' School</b> at Neil Road
1958	Mrs Lim Bock Kee – 1 <sup>st</sup> Asian Principal of <b>Fairfield Methodist Girls' School</b>
1983	Miss Cheong Yuen Lin – 1 <sup>st</sup> Principal of <b>Fairfield Methodist Primary School</b> (co-ed and relocated to Dover Road)
2009	Renamed <b>Fairfield Methodist School (Primary)</b> to reflect the common founding, heritage and Methodist ethos of Fairfield Methodist Schools
2015	Completion of School Upgrading Project with new facilities
2023	<b>135<sup>th</sup> Anniversary Celebrations</b>

# Our School Mission

**To provide a holistic education in a  
Christian environment  
so as to nurture  
leaders of good character,  
who are equipped to serve  
God, nation, community and school**





FAIRFIELD METHODIST SCHOOL (PRIMARY)

Train up a child  
in the way he should go:  
and when he is old,  
he will not depart from it.

PROVERBS 22:6



# Our School Vision

**Leaders of the future  
pursuing excellence,  
upholding strong Christian moral values  
and having a heart to serve**

# Our Fairisian Outcomes

## Masters Self

**Has a spirit of excellence**  
**Thinks critically and creatively**  
**An ethical digital user**



## Relates Well to Others

**Appreciates differences**  
**Communicates skilfully**  
**An empathetic individual**

## Serves God & the Community

**Reflects actively**  
**Collaborates inclusively**  
**A proactive contributor**

# Every Fairisian, a Future-Ready Leader who ...

**MASTERS  
SELF**



- Has a spirit of excellence
- Thinks critically and creatively
- Is an ethical digital user

# Every Fairisian, a Future-Ready Leader who ...

**RELATES WELL  
TO OTHERS**



- Appreciates differences
- Communicates skilfully
- Is an empathetic individual

# Every Fairisian, a Future-Ready Leader who ...

**SERVES GOD AND THE COMMUNITY**



Reflects  
actively



Collaborates  
inclusively



Is a proactive  
contributor

# Parent-Teacher Communication

- Student Handbook
- Email
- Meet-The-Parent Sessions
- Ad hoc meetings with teachers via appointment

# Partners in Education (PiE)



Be part of it!

# Home-School Partnership in Skill Development



When children enter kindergarten, the key question is not whether they know the alphabet or can add and subtract.

Instead, the important skills include **impulse control, attention span, emotional regulation**. These abilities **don't develop on their own**. Instead, the relevant regions of the brain need to be **activated** – and **often**, since the brain's networks are **strengthened through practice**.



Dr Amanda Tarullo

Director of Brain & Early Experiences Laboratory at Boston University



# Executive Functioning Skills



What are executive functioning skills?

- Mental skills we use to **self-regulate** the way we **interact with our environment**

Executive functioning skills can be broadly broken into **three main categories**:

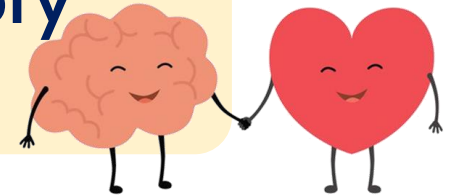
**Working  
Memory**



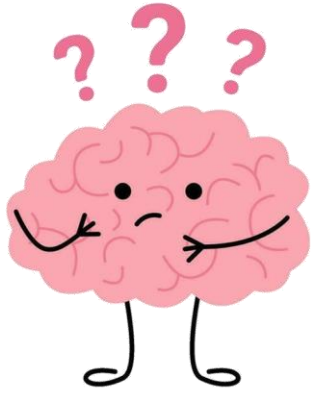
**Cognitive  
Flexibility**



**Inhibitory  
Control**



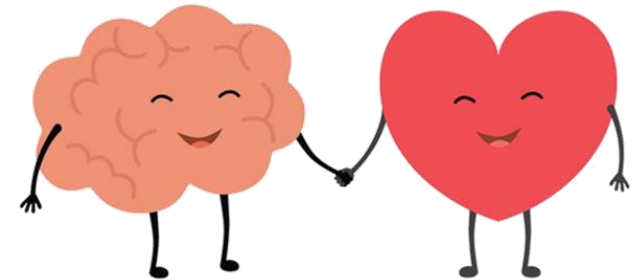
# Executive Functioning Skills



Sometimes young children learn executive functioning skills naturally **by observing others**.

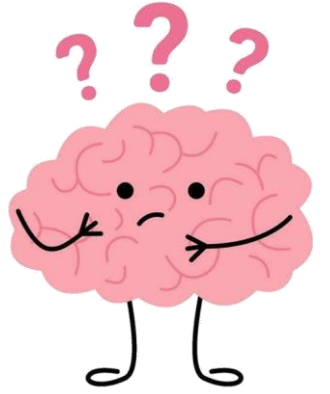
Some skills, though, need to be **taught explicitly**.

Importance of **early support**: Young children's brains are rapidly changing and most **malleable** during these earlier years.



# Importance of Executive Functioning Skills

EF skills provide the foundational platform for preparing students' readiness and ability to learn



Longitudinal study by Morgan et al. (2019)

- Tracked ~11,000 kindergarten students through 3<sup>rd</sup> grade
- **Key finding:** Children with difficulties in EF in kindergarten **continued to experience academic difficulties in later years**
- Importance of early intervention efforts **before children internalise negative feelings about their academic performance and exhibit challenging behaviours**

Morgan, P. L., Farkas, G., Wang, Y., Hillemeier, M. M., Oh, Y., & Maczuga, S. (2019). Executive function deficits in kindergarten predict repeated academic difficulties across elementary school. *Early Childhood Research Quarterly*, 46, 20-32. <https://doi.org/10.1016/j.ecresq.2018.06.009>

# How can you prepare your child for Primary 1?

In primary school, your child will be equipped with skills to:

- Adjust to a larger learning environment
- Interact with more peers and teachers
- Adapt to longer school hours
- Become more independent and responsible



<https://go.gov.sg/transition-to-primary1>

# Transition to Primary 1

Mrs Chan Hwee Binn  
Year Head / Lower Primary

# Transition to Primary 1

When your child enters primary school, they will experience:

New friends and teachers



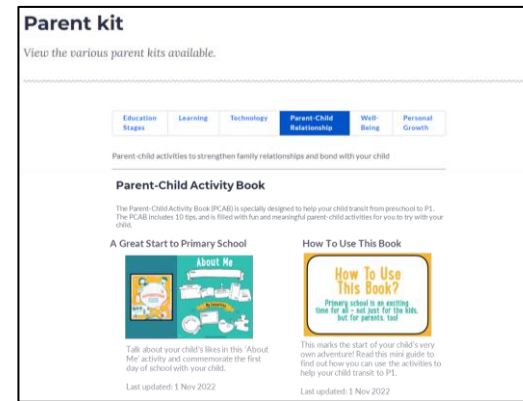
New routines

New learning environment

# Parent-Child Activity Book

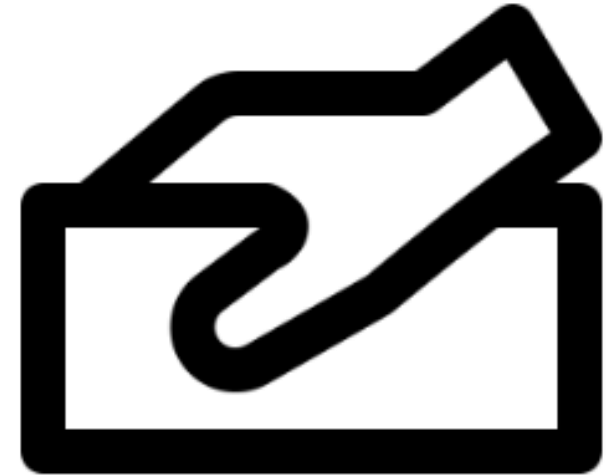
**10 TIPS FOR PARENTS**  
to help you navigate your child's  
first year in primary school.

**Chat with your child**  
**Boost their confidence**  
**Practise various scenarios**  
**Create something interesting**  
**Thank others for their help**  
**Pledge to do things together**



# Start It Right! @ FMS(P)

- A series of termly back-to-school engagements
- With the aim to **lay a strong foundation** for all students through **transition support** in:
  - Strengthening **self-management skills**
  - Building strong **teacher-student relationships** and **peer support relationships**



Classroom Work  
Habits

Social  
Communication

Emotional  
Regulation

Positive  
Relationships



# Developing Executive Functioning Skills at Home

## Time Management:

- Create a **daily schedule** that includes blocks of time for different activities
  - For example: mealtimes, play, homework, bedtime
- **Engage** your child in planning the daily schedule to help him/her understand:
  - Estimation of time taken to complete tasks
  - Planning ahead: How to sequence and prioritise activities



# Developing Executive Functioning Skills at Home

## Task Initiation & Completion

- Task initiation: Guide your child to **identify the first step** in a task and to **break it down** into manageable parts
- Task completion: Help your child **learn how to complete a task** before moving on to the next activity



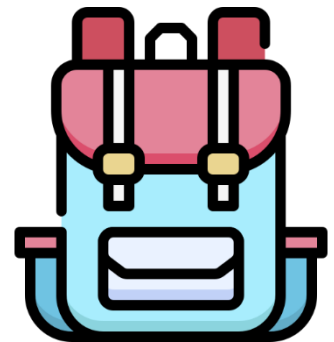
# Developing Executive Functioning Skills at Home

## Organisational Skills

- Involve your child in **packing his/her schoolbag** daily based on timetable
- Guide your child in the **use of the Student Handbook** for tracking

## Help-Seeking Skills

- Teach your child ways to **seek help** in appropriate ways



# Welcome to FMS(P) Slides for Students

We have prepared a deck of slides with information on:

- School schedule
- School uniform
- People in school
- Places around in school

We encourage parents to take some time to go through the slides with your child prior to Day 1 of school to reinforce what they can expect for Primary 1.



<https://for.edu.sg/welcometo-fmsp>

# A New Beginning

**Miss Chan Sew Yoon**  
**Assistant Year Head / Lower Primary**

# A New Beginning

**First Day of School:  
2 January 2025 (Thursday)  
Week 0**

# A New Beginning

- **School Hours**

- ❖ 7.30am to 1.30pm

- ❖ Silent Reading at 7.20am

- ❖ Bring a storybook for Silent Reading:  
MTL books – Mon & Fri  
EL books – Tue, Wed & Thu

- ❖ Nametag to be worn in Week 0 & 1. Write down school bus number on the tag, if any.

# A New Beginning

## Drop-off points in the morning

Mode of transport	Drop-off point
By school bus	Foyer
By car	Foyer
Walk to school	Gate 1 & 2



# A New Beginning

- **Recess**

- 9.30am to 10.00am (Usual)
- Extended recess & Buddy System (Week 0 & 1)

## Staggered Recess Timing on Day 1

<b>1A – 1D</b>	<b>9.00am to 9.45am</b>
<b>1E – 1J</b>	<b>10.00am to 10.45am</b>

How much to give your child for recess?

**Around \$3 - \$4**

# A New Beginning

- **Snack Time**

- 2<sup>nd</sup> meal break
- Around 11.30am(10 min)
- Venue: Classroom
- Prepare a simple dry snack eg. bread, fruits, biscuits



# Traffic along Dover Road

- Heavy traffic is expected during reporting and dismissal times
- No vehicular entry to school during dismissal time
  - \*1pm to 1.45pm (dismissal 1)
  - \*3.45pm to 4.15pm (dismissal 2)
- No parking or waiting in school
- Use the multi-storey car park next to FMSS (Blk 2A, Dover Road) and walk over

# A New Beginning

- **Dismissal**

- 12pm (Week 0, Day 1 & 2, 2-3 Jan, Thur-Fri)
- 1.30pm (Week 1 onwards)

	Day 1 & 2 (2-3 Jan) – Week 0	Week 1 onwards
By foot	12pm	1.30pm
By school buses	Buses leave school at 12.10pm	Buses leave school at 1.40pm
By parent's car	Parents can drive in after 12.15pm	Parents can drive in after 1.45pm

- Parents are to pick up your child from the **Gate 1** if he/she is going home by foot.

# A New Beginning

- **Physical appearance**

- School uniform or PE attire to be worn at all times
- PE attire
- Neat haircut

- **Absence from school**

- MC must be produced
- Seek approval in advance if leaving school early

# Security in FMS(P)

- Meeting with school personnel is by appointment
- All visitors are required to register at the General Office

# Connect with Our Special Educational Needs (SEN) Team

Do you have any queries on special educational needs (SEN) support for your child?

If you have not previously connected with our SEN Team, we welcome you for a chat in Classroom 5C (Level 2, beside the back door of the MPH) after the classroom session.



You can also contact the SEN Team via  
[FMSP\\_SENteam@schools.gov.sg](mailto:FMSP_SENteam@schools.gov.sg).



Thank you